

PlanTrack®



Realizes an effective planning department



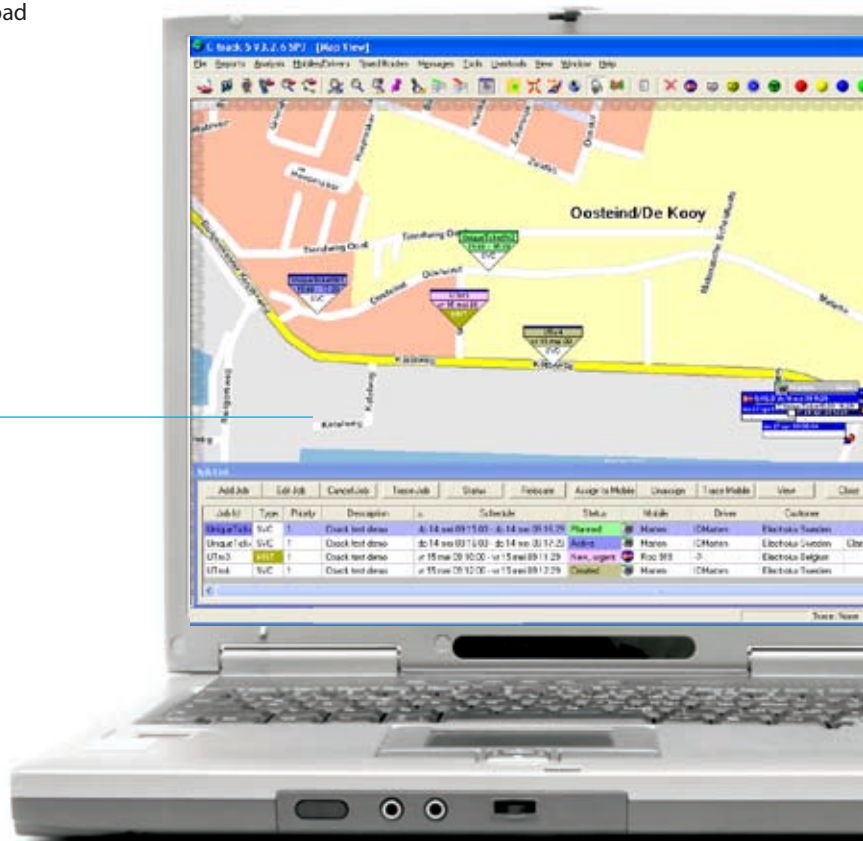
C-Track has developed its professional product line with a new (second) generation PlanTrack®. The module visualizes external company processes and promotes the effectiveness and efficiency of the planning department. Unique to PlanTrack® module is that the system not only shows where company cars are located, it also anticipates on the need for broader company information such as workload in relation to time scale management, planning and geography.

Description

The PlanTrack® extension transforms a professional C-Track system to an enterprise system. By knowing where employees are and which part of their planning they've completed, it enhances the employability of employees and the efficiency of your planning department. Using PlanTrack® also allows the department to enhance its planning skills by:

- locating employees
- showing which tasks are completed
- showing on which job the employee is currently working
- visualizing the scheduled workload

*Visualizing your
jobs and employees*



Application

The PlanTrack® module is the perfect stepping stone to optimize business force automation.

The C-Track PlanTrack® module is often used in combination with other information technology solutions. In many cases we join forces with specialist back-office packages. (Almost) all systems and solutions (mobile work orders) can be integrated.

Interface

For an optimum use of the functionality PlanTrack® should be linked with your back-office software. This is a quick and easy operation through XML, an international standard for exchanging data.

Solution

By connecting the geographical position of cars, the activities of workers and the scheduled workload PlanTrack® creates an interactive tool on which planners can effectively respond. It frequently occurs that emergencies ask for an immediate response of the planning or service department. In other cases ineffective planning causes fitters to return to addresses. Cases in which adequate intervention of the planning department is required. Why does the employee return and how often do these cases occur?

The PlanTrack® module:

- visualizes planning opportunities
- identifies planning problems in an early stage
- provides the possibility of effectively intervening

In addition, the system automatically identifies cars leaving the work location. After a couple of hours the system automatically logs off the order.

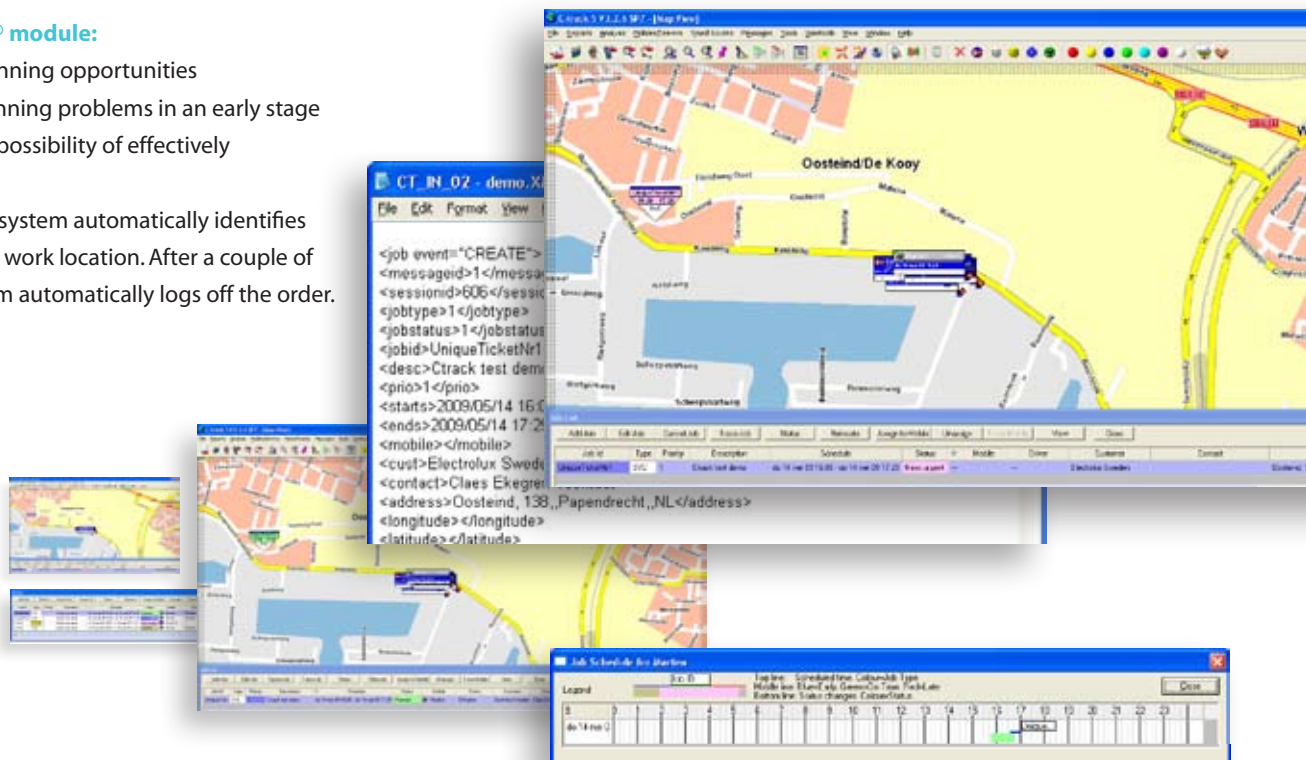
Return of investment

Improving the planning is a very effective tool to optimize the productivity of employees. Another advantage is that the module limits travel times and gasoline consumption. Linking the system to the back-office technology PlanTrack® contributes to:

- increasing the productivity
- improving employability of employees
- optimizing the effectiveness of the planning department
- the return of investment of business processes
- defining improvement opportunities

Visualization

Because contracts are shown on the map, it provides the possibility to locate employees in relation to the status of their contracts and workload. A green triangle stands for a completed contract, the employee is still working on the job when the triangle is colored orange, and a red triangle reveals the scheduled workload. Furthermore the module offers the possibility to select service, maintenance and installation jobs.



www.ctrack.eu

C-Track Benelux B.V. • Ketelweg 44 • 3356 LE Papendrecht • The Netherlands
tel +31 (0)78 644 93 34 • fax +31 (0)78 644 93 35 • e-mail info@ctrack.nl

B Y

